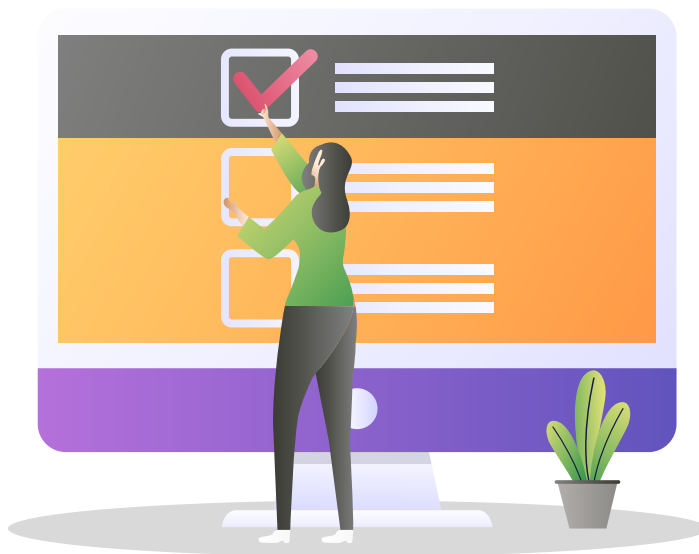


We want to hear from YOU!



Sonoma County's Behavioral Health Services will be changing in 2026. Your responses to this survey will help guide BHSA in determining how to allocate funding, improve services, and plan for the future.

Please take a few minutes to complete this survey by scanning the QR code on the left.



We value your input!
Thank you!

For questions or concerns email: melissa.ladrech@sonoma-county.org