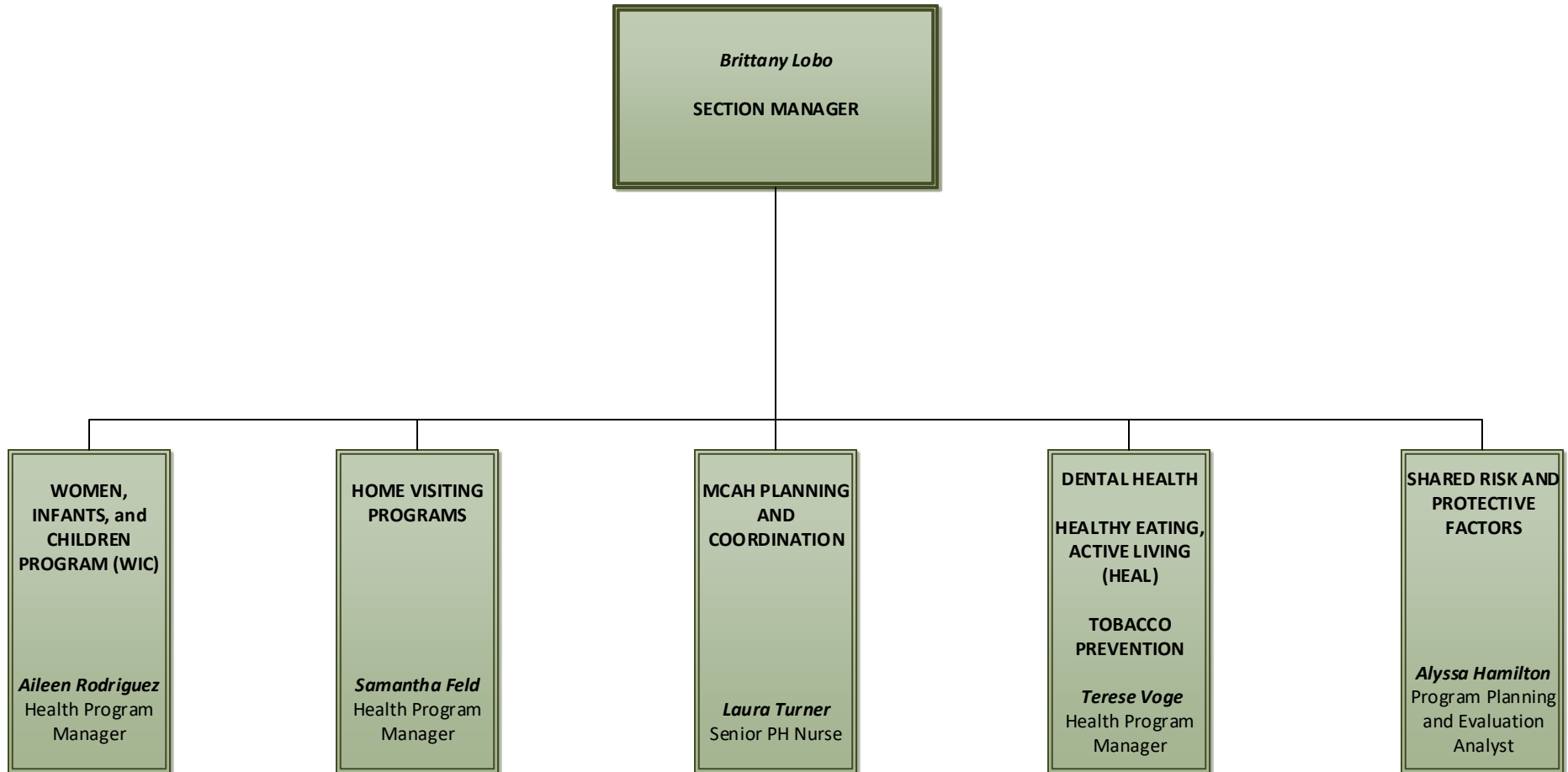




**COMMUNITY  
& FAMILY HEALTH**

Director: Nolan Sullivan  
Issue Date: May 1, 2025  
(Organizational Chart)



## Community & Family Health

- Brittany Lobo, Section Manager
  - Women, Infants, and Children Program (WIC), Aileen Rodriguez, Health Program Manager
  - Home Visiting Programs, Samantha Feld, Health Program Manager
  - MCAH Planning and Coordination, Laura Turner, Senior PH Nurse
  - Dental Health, Healthy Communities, Healthy Eating, Active Living (HEAL), Tobacco Prevention, Terese Voge, Health Program Manager
  - Shared Risk and Protective Factors, Alyssa Hamilton, Program Planning and Evaluation Analyst